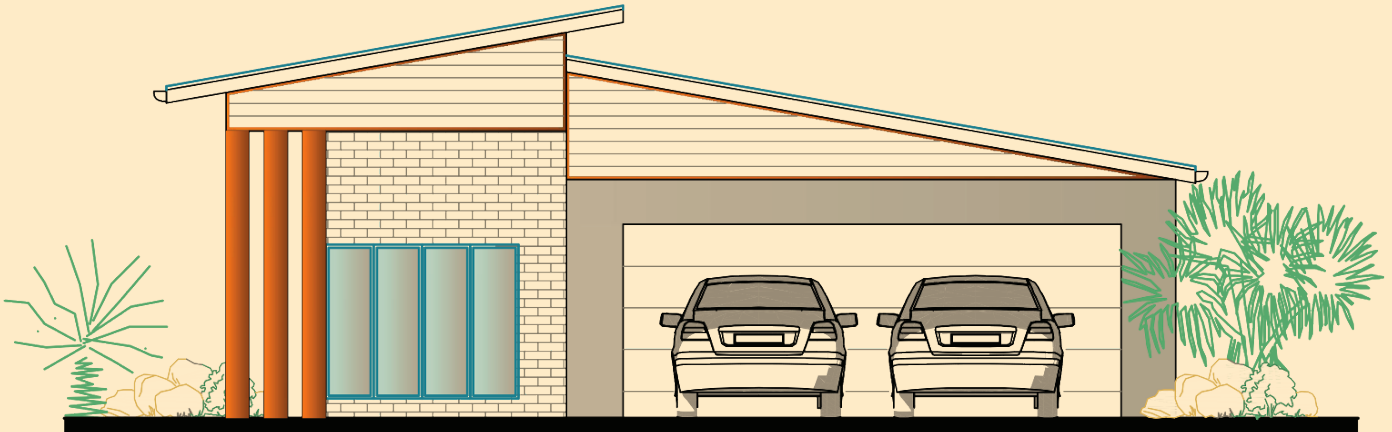


PHI



Size 190m²
Width 11.0m
Length 20.0m

Central Park Estate Stage 1B offers **complementary, architecturally designed houses.**

Complementary designs:

- Are offered complementary to you to assist with your new home at Central Park Estate
- You are welcome to obtain quotes from your preferred builders
- We can also quote you a total turnkey price for the house
- Facades shown can be changed to suit your preference
- Finishes internal and external are indicative and can be changed to suit your requirements
- Roofs can be Colorbond or Tiled

